

NGOMA SAFARI LODGE

CHOBE FOREST RESERVE
BOTSWANA

ACTIVITIES AT NGOMA SAFARI LODGE

	Game Drive
	Walking
	Boating
	Bird Watching
	Photographic
	Arm Chair Safari

ABOUT NGOMA SAFARI LODGE

This boutique lodge, an oasis in a wildlife wonderland, offers unrivalled panoramic views over the game-rich floodplain and Chobe River. It is on the doorstep of Chobe National Park, also known as the 'Land of the Giants,' as it is home to the largest population of elephants on Earth. Expect a vast and diverse array of wildlife as knowledgeable guides take you on safaris through the Chobe National Park, lazy afternoons by the pool and stunning dinners under African stars.

Ngoma is a small boutique lodge set on a plateau, overlooking the Chobe River and floodplain. All 8 thatched river-facing suites have spacious internal and external living areas, a large luxury bath, an inside and outside shower, air conditioning, overhead fans, mini bar, tea/coffee facilities including a Nespresso machine.

In addition, each suite has a private 'refresh and relax' pool conveniently located in the external living area.

All rooms are equipped with three-quarter beds that can be converted to a king size bed.

Two of the eight suites have sofa beds and may be used as triples. The sofa beds are recommended for children between 10 and 11 years. Each of the suites have a view of the river and offers the opportunity to see the famous Chobe elephants, migrating zebra or buffalo grazing on the floodplain below.

[↓ VIEW NGOMA SAFARI LODGE IMAGES](#)





MACHABA SAFARIS

CGAE CGAE
TLHABOLOGO
TRUST

CAPRIVI

KASANE

NGOMA
SAFARI
LODGE

GOMOTI PLAINS CAMP &
GOMOTI PRIVATE

KIRI CAMP

MONACHIRA
CAMP

MACHABA CAMP &
LITTLE MACHABA

Shakawe

Sepupa

Duba Plains Camp

Selinda Camp
Zarafa Camp

Savuti

Jao

Mombo

Seba

Abu Camp

Xigera

Eagle Island

Sandibe

Chief's Island

15 min flight

30 min flight

15 min flight

30 min flight

15 min flight

30 min flight

15 min flight

30 min flight

15 min flight

30 min flight

15 min flight

30 min flight

15 min flight

30 min flight

15 min flight

30 min flight

15 min flight

30 min flight

15 min flight

30 min flight

15 min flight

30 min flight

15 min flight

30 min flight

15 min flight

30 min flight

15 min flight

30 min flight

15 min flight

30 min flight

15 min flight

30 min flight

15 min flight

30 min flight

15 min flight

30 min flight

15 min flight

30 min flight

15 min flight

30 min flight

15 min flight

30 min flight

CHOBE
NATIONAL PARK

MAUN

MAKGADIKGADI
PANS
NATIONAL PARK

NXAI PAN
NATIONAL PARK

WHAT TO PACK?

Clothing on safari should be comfortable and colours should blend in with nature as much as possible. Beige, greens, browns, tan and khaki coloured clothing is advisable. Evening dress is 'smart casual', no formal wear required.

YEAR ROUND

- Layers – the best way to dress on safari, due to fluctuating temperatures. We recommend cotton. Long sleeves and trousers will protect from both sun and insects.
- Fleece/warm sweater or warm jacket for morning and evening game drives
- Hat – broad brimmed for protection against the sun.
- Sunglasses – dark ones to cut the glare.
- Light cotton shirts and T-shirts; Blouses or shirts
- Shorts, trousers and chinos
- Shoes – good, comfortable sturdy closed shoes/boots and socks for walking.
- Flip flops/thongs for use in outdoor showers.
- Sunblock, insect repellent and lip salve.
- Binoculars – each person should have their own so as not to miss out on any sightings.
- Camera with spare batteries, memory sticks, film, and the correct charging apparatus.

SUMMER

- A kikoi or light sarong has a multitude of uses.
- Light, compact jacket (windcheater) for the rainy season.
- Swimwear

WINTER

- It gets very cold in the evenings and early mornings, and quite hot during the day – so layers are essential.
- Warm leggings and thick socks – good to wear during cold weather.
- Hat – woollen beanie for warmth.
- Gloves & Scarf

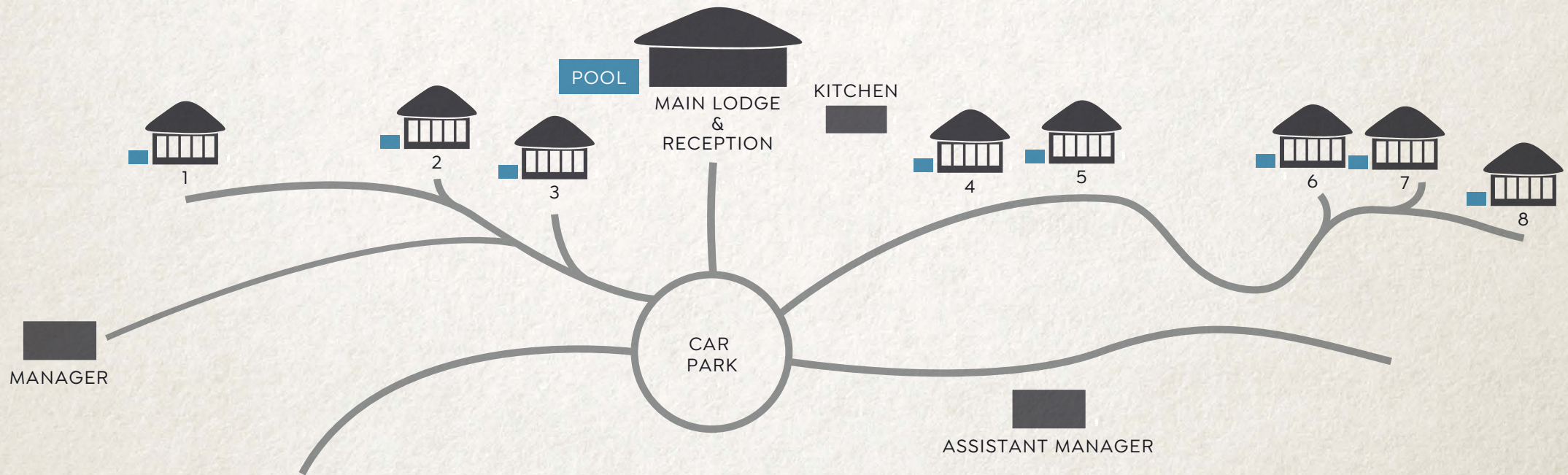
WHERE IS NGOMA SAFARI LODGE LOCATED?

Ngoma Lodge is situated in the Chobe Forest Reserve on a magnificent ridge which overlooks the vast span of the Chobe River flood plains and the Caprivi strip of Namibia. The Forest Reserve is an enclave largely surrounded by the Chobe National Park. To the northwest of it are seasonal marshes, Lake Liambezi and eventually Namibia. It is 154 500 hectares. The lodge is a short 10-minute drive from the entrance to the Chobe National Park where all game drives are enjoyed. It is a 45-minute drive from Kasane where guests get to experience a boat cruise on the Chobe River.

MACHABA SAFARIS

VISIT WWW.MACHABASAFARIS.COM
FOR FURTHER INFO EMAIL ENQUIRIES@MACHABASAFARIS.COM

NGOMA SAFARI LODGE CAMP LAYOUT





FACILITIES AVAILABLE AT NGOMA SAFARI LODGE

AREA & CONCESSION	Chobe Forest Reserve
CO-ORDINATES	S 17° 56' 58.03 E 24° 41' 35.57
WIFI	Main area / In Room
ACCEPT CHILDREN	No children under 10 years
NUMBER OF TENTS	8 Suites
PRIVATE VEHICLE	✓
GUIDE ROOM	X
NUMBER OF GUESTS PER VEHICLE	6
WALKING	✓ (Minimum age is 16 years of age)
MOKORO SEASONAL	X
BOATING SEASONAL	Yes - year round
GAME DRIVE	✓
FISHING	On request
AIRCON OR FAN	Airconditioner / Fan
HAIRDRYER	✓
PLUG POINTS	240 V
BATH	All rooms
POOL	✓
AIRSTRIP	Land at Kasane Airport
DISTANCE FROM AIRSTRIP	45 Minutes
ACCESS	Self drive or fly in
SPA	On request
SAFE	✓
LAUNDRY	✓

ESTIMATED FLIGHT TIMES

MAUN						
25	MACHABA CAMP					
25		LITTLE MACHABA				
15	20	20	GOMOTI PLAINS			
15	20	20		GOMOTI PRIVATE		
10	20	20	10	10	KIRI CAMP	
	45	45	50	50	55	KASANE

*Please note that these are guidelines. Depending on the flight route clients may in fact have one or two stops enroute to their destination.

A TYPICAL DAY :

WINTER TIMES	SUMMER TIMES	ACTIVITY
05:30	05:00	Wake Up Call
06:00	05:30	Continental Breakfast
06:30	06:00	Departure From Camp
11:30	11:00	Brunch Is Served
15:00	15:30	Afternoon Tea In Main Area
15:30	16:00	Depart For Afternoon Activity
18:30	19:00	Arrive Back At Camp
19:30	20:00	Dinner Is Served

*Disclaimer:

Please note that the times outlined above are indicative and may vary depending on the camp, season, and other factors. Each day's schedule is tailored to provide the best experience, so please expect flexibility in timings

